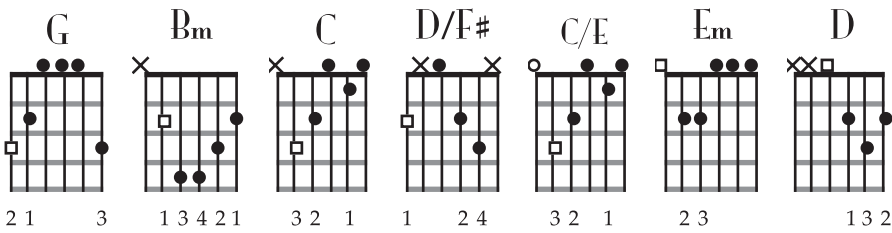


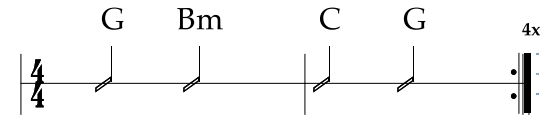
The Weight

The Band
 Music from the Big Pink (1968)
 Capo II

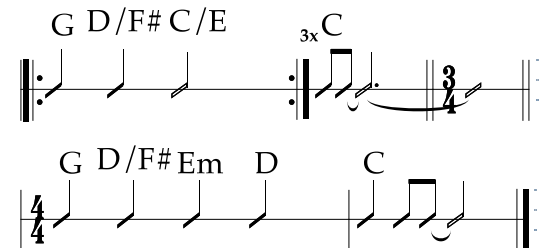


G Bm C G
 I pulled in to Nazareth. I was feeling about half past dead
 I just need some place where I can lay my head
 "Hey, Mister, can you tell me where a man might find a bed?"
 He just grinned, shook my hand, "No" was all he said

Verse



Chorus



G D/F# C/E
 Take a load off, Fanny
 G D/F# C/E
 Take a load for free
 G D/F# C/E
 Take a load off, Fanny
 C and... you put the load right on me G
 and put the load
 and
 ||:G D/F# Em D |C :||

G Bm C G
 I picked up my bag. I went looking for a place to hide
 when I saw Carmen and the devil walking side by side
 I said, "Hey, Carmen, come on. Let's go downtown."
 She said, "I got to go, but my friend can stick around."

CHORUS

G Bm C G
 "Go down, Miss Moses, there's nothing you can say"
 It's just old Luke, and Luke's waiting on the judgement day
 "Well, Luke, my friend, what about young Anna Lee?"
 He said, "Do me a favor, son, won't you stay and keep Anna Lee company"

CHORUS

G Bm C G
 Crazy Chester followed me and he caught me in the fog
 He said, "I will fix your rack, if you'll take Jack my dog."
 I said, "Wait a minute, Chester. You know I'm a peaceful man."
 He said, "That's okay, boy. Won't you feed him when you can?"

CHORUS

G Bm C G
 Get your Cannonball now, to take me down the line
 My bag is sinking low, and I do believe it's time
 To get back to Miss Fanny, you know she's the only one
 Who sent me here with her regards for everyone



The Weight

Musical notation for the song "The Weight" in G major, 4/4 time. The top staff shows the melody with chords D, G, D, C, G, G. The bottom staff shows the bass line with fret numbers: 3-2-4, 3-3-5, 3-3-5, 3-2-2, 3-2-4, 3-2, 1-0-2, 1-0-2, 1-0-0-2, 0-2, 0-2, 3-3-3, 3-3-3, 3-3-3.

Standard guitar chord diagrams for G, D, C, Bm, Em, G, Bm, C, Em, D with fingerings: 1 3 2, 1 2 3, 3, 3 1 1 1, 3 2 1, 3 1 2 1, 3 1 1 1, 3 2 1 1, 3 4 2 1, 3 2 1 1.

Diagrams for barre chords: G major (V, VII, IX), G major (V, VII, IX), B minor (V, VII, IX), and C major (V, VII, IX).

