

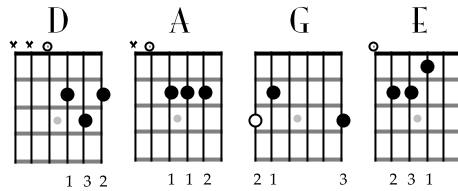
Glendale Train

John Dawson, New Riders of the Purple Sage

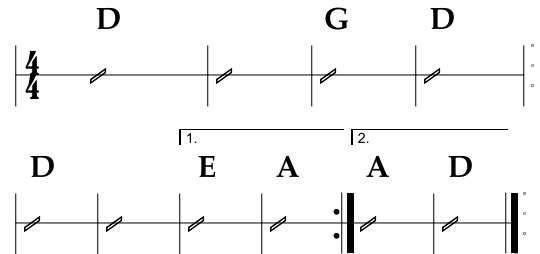
Glendale Train (1971)

No Capo

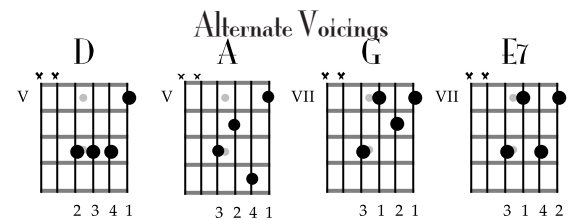
D
 Somebody robbed the Glendale train
 G D
 This mornin' at half past nine
 D
 Somebody robbed the Glendale train
 E A
 And I swear, I ain't lyin'
 D
 They made clean off with sixteen G's
 G D
 And left two men lyin' cold
 D
 Somebody robbed the Glendale train
 A D
 And they made off with the gold



♩ = 126

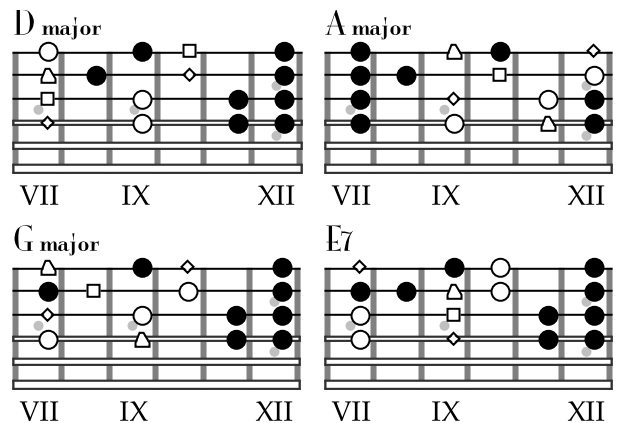
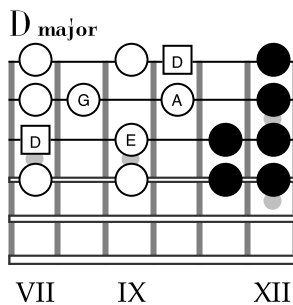


D
 Charlie Jones was the engineer
 G D
 He had twenty years on the line
 D
 He kissed his wife at the station dear
 E A
 This morning at six thirty five
 D
 Everything went fine till half past nine
 G D
 When Charlie looked up and he saw
 D
 Men on horses, men with guns,
 A D
 And no sign of the law



CHORUS

D
 Amos White was the Baggage man
 G D
 and dearly loved his job
 D
 The company, they rewarded him,
 E A
 With a golden watch and fob
 D
 Well Amos he was workin' time
 G D
 when the door blew off his car
 D
 They found Amos White in fifteen pieces
 A D
 Fifteen miles apart



CHORUS